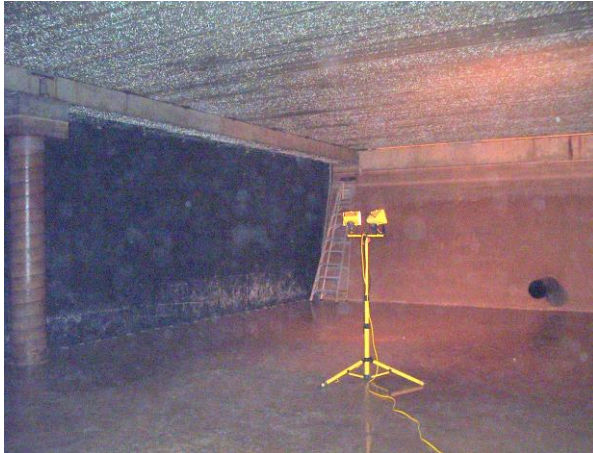


## Water Treatment System Upgrades



### Case Study Details

This project was incorporated as part of a series of upgrades at the Stouffville Water Supply System, Wells 5 and 6. The plant required a solution to divert the flow of each well in order to increase the residence time of the water in the stream.

H2FLOW EQUIPMENT INC. supplied EFI Thermafab geomembrane baffle curtains that were custom fabricated for the specific length and depth of the tank to achieve the desired flow pattern. The curtains were fabricated from seaman black, potable grade flexible membrane. The position of the baffle is maintained by a 3/8" poly-pro rope in the support hem around the perimeter of each curtain, stainless steel roof cables and stainless steel bolts.

The system has been operating effectively; the residence time of the water in each well has increased as required and the baffles are withstanding chlorine, extreme temperature changes, rips, abrasion and hydraulic shocks.

The baffles require little or no operator attention for upkeep and maintenance. They are hydraulically balanced on installation and are not affected by nominal changes in level due to unexpected peak flow conditions.

**Engineering Consultant:** MacViro Consultants Inc.

**Installation Contractor:** VGN

**Start-Up:** 2005-2006