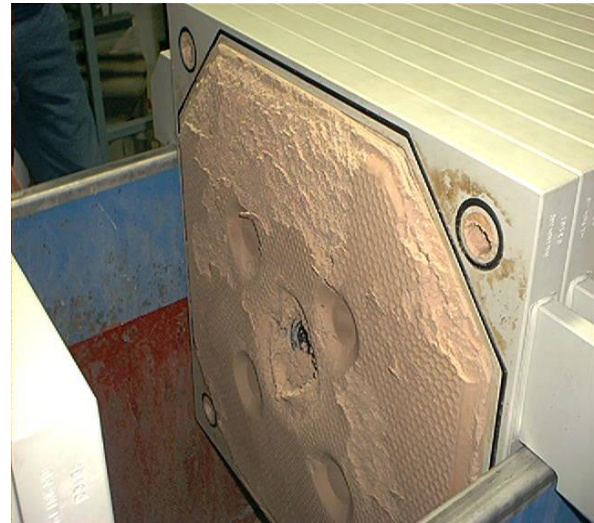


## Sludge Dewatering Treatment System



### Case Study Details

Chapman's Ice Cream required a solid waste reduction solution for their wastewater treatment system.

H2Flow provided two plate and frame presses for sludge dewatering.

Installed in 2002, the plant has been processing both primary sludge from a DAF and secondary sludge from a biological treatment plant through the presses.

The units have been achieving the following removal performance:

	Influent Dry Solids	Effluent Dry Solids	Liquid Removal
<b>Primary Sludge</b>	5-6 %	27-30 %	80 %
<b>Secondary Sludge</b>	3-4 %	25-28 %	84 %